



STANCO Signage Systems

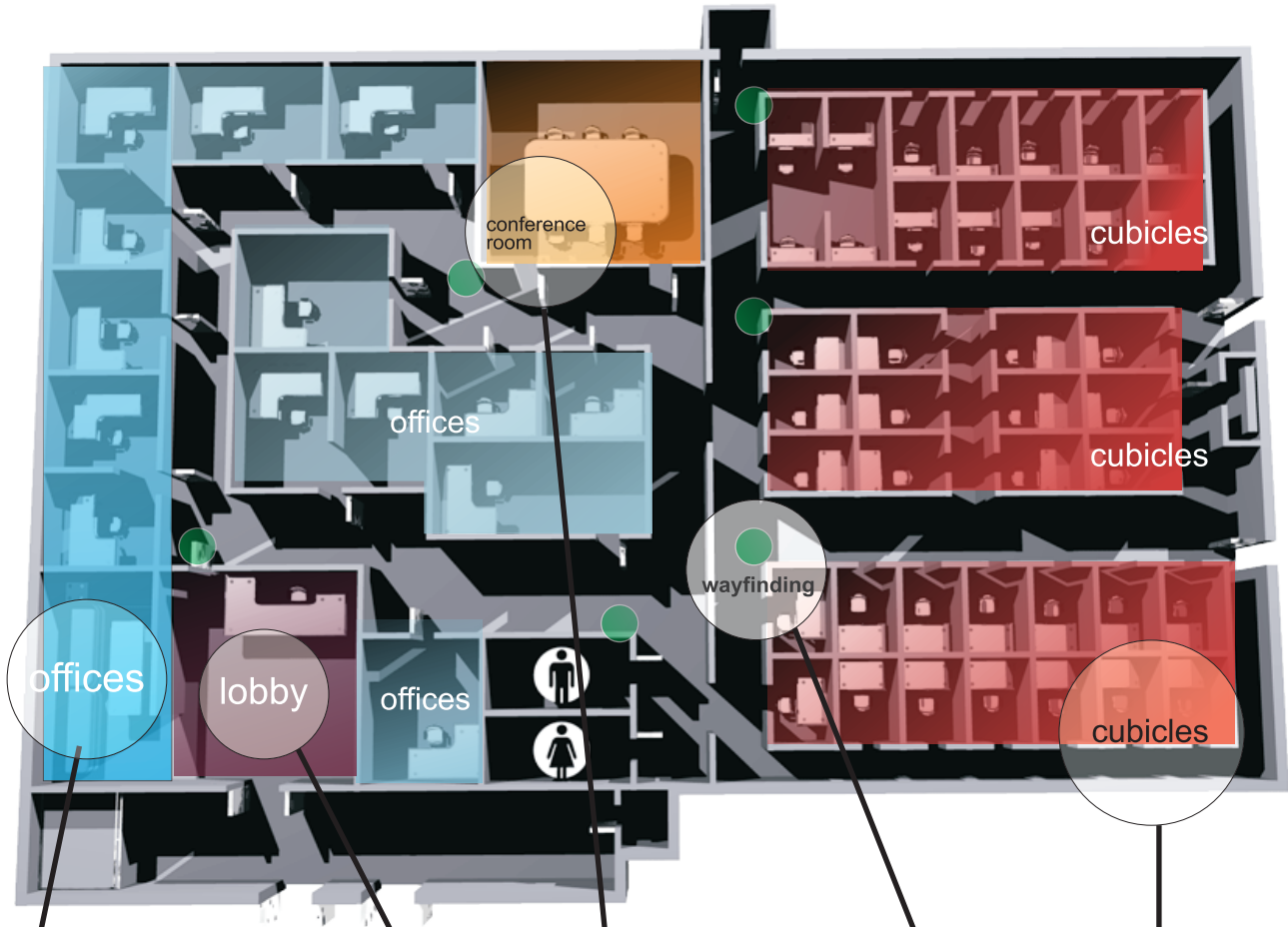
1401 E St Andrew Place, Santa Ana, Cal., 92705
 714 549 9303 fax 549 9360 e-mail stanco@pacbell.net



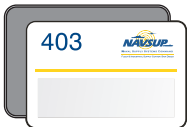
1 800 580 6668

OFFICE SIGNAGE PROGRAM

GSA contract GS07F 0055L



offices ■



offices require... ADA/Braille signs next to doors for compliance with ADA regulations numbers and bead braille * window for printed name insert included and frame with magnetic back

lobby ■

typical logo on wall dimensional behind or on adjacent wall



cubicles ■



these cubicles need signs with windows to identify occupants/or service

conference room ■

this room requires a sign with braille and a sliding panel vacant and in use..



wayfinding signs ●

*window signs at major intersections directing visitors or staff to department or identifying occupants down a hallway by cubicle

flag style signs perpendicular to wall identifying destinations such as restrooms, conference rooms doors leading to lobby or exit/parking

